



ELECTRICAL AND DATA CABLE INSTALLATION

for

Washington Metropolitan Area Transit Authority

Contract Number FQ17021

VOLUME 3

**Drawings Part 3b
Large Kiosk**

November 13, 2016

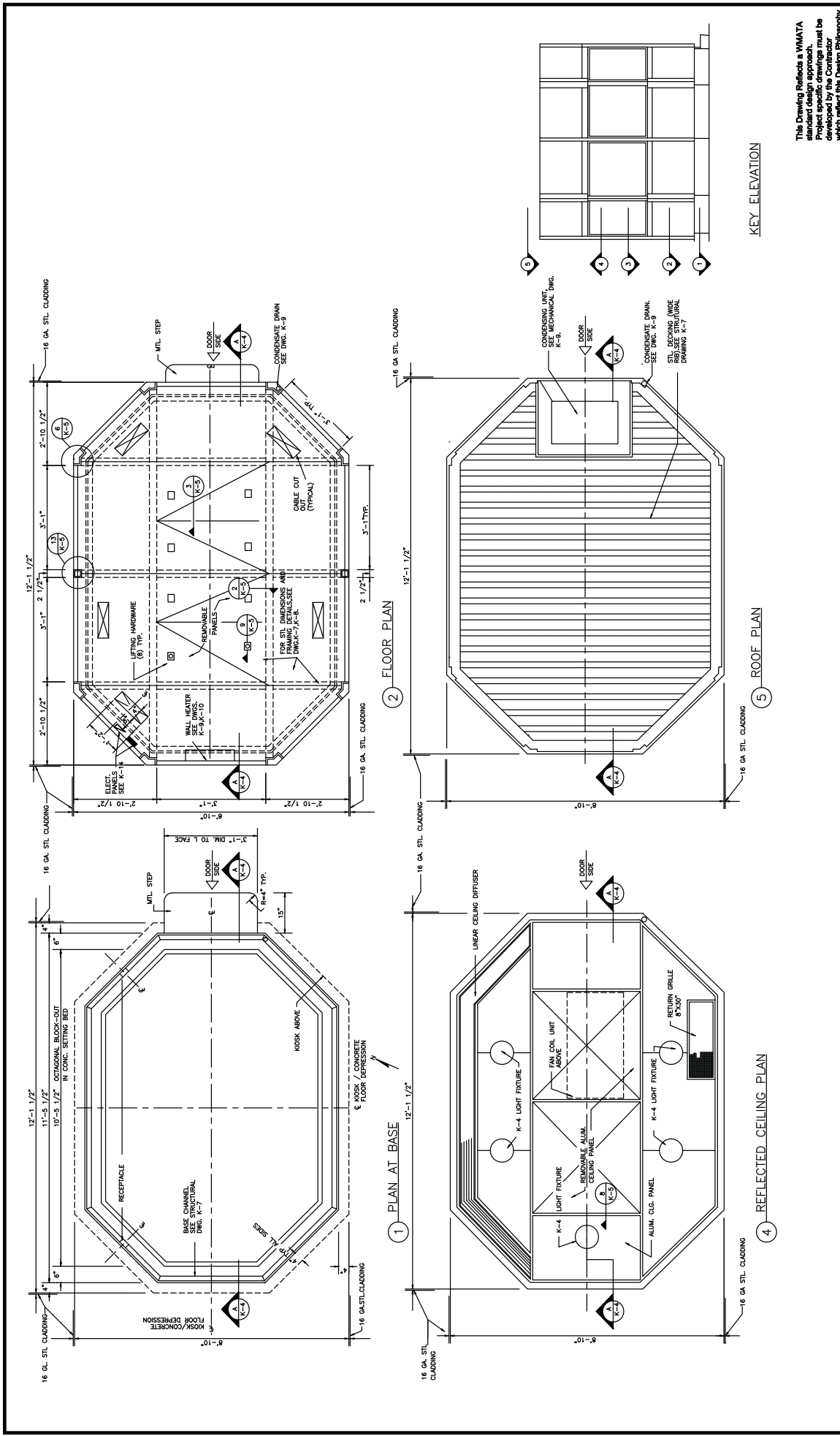
Final Submission

WASHINGTON METROPOLITAN AREA TRANSIT AUTHORITY

**VOLUME 3
DRAWINGS PART 3B
LARGE KIOSK
TABLE OF CONTENTS**

PAGE NO.

1	KIOSK – PLANS AT BASE, FLOOR, CEILING, AND ROOF	3
2	KIOSK – ELEVATIONS	4
3	KIOSK – SECTIONS AND DETAILS	5
4	KIOSK – DETAILS	6
5	KIOSK – FLOOR PLAN, SECTIONS, DETAILS, AND STRUCTURAL NOTES	7
6	KIOSK – FLOOR AND ROOF FRAMING PLANS, ELEVATION AND SECTIONS	8
7	KIOSK – FLOOR PLAN , ELEVATION SECTIONS AND DETAILS	9
8	KIOSK – AIR CONDITIONING AND HEATING PLANS AND SECTIONS	10
9	KIOSK – CABINET DIMENSIONS	11
10	KIOSK – CABINET DIMENSIONS	12
11	PASSENGER/ATTENDANT INTERPHONE SPEAKER LOCATIONS	13
12	CEILING PLAN	14



The Drawing Reflects a VMATA
 Project. All drawings
 developed by the Contractor
 which reflect this Design Philosophy

WASHINGTON METROPOLITAN AREA TRANSIT AUTHORITY
 DEPARTMENT OF TRANSIT SYSTEM DEVELOPMENT
 OFFICE OF SYSTEMS

APPROVED: *[Signature]* May 3, 2001
 DIRECTOR

DATE

REVISIONS

DATE	BY	DESCRIPTION
08/2001	STP	Revised and issued by the Authority

REFERENCE DRAWINGS

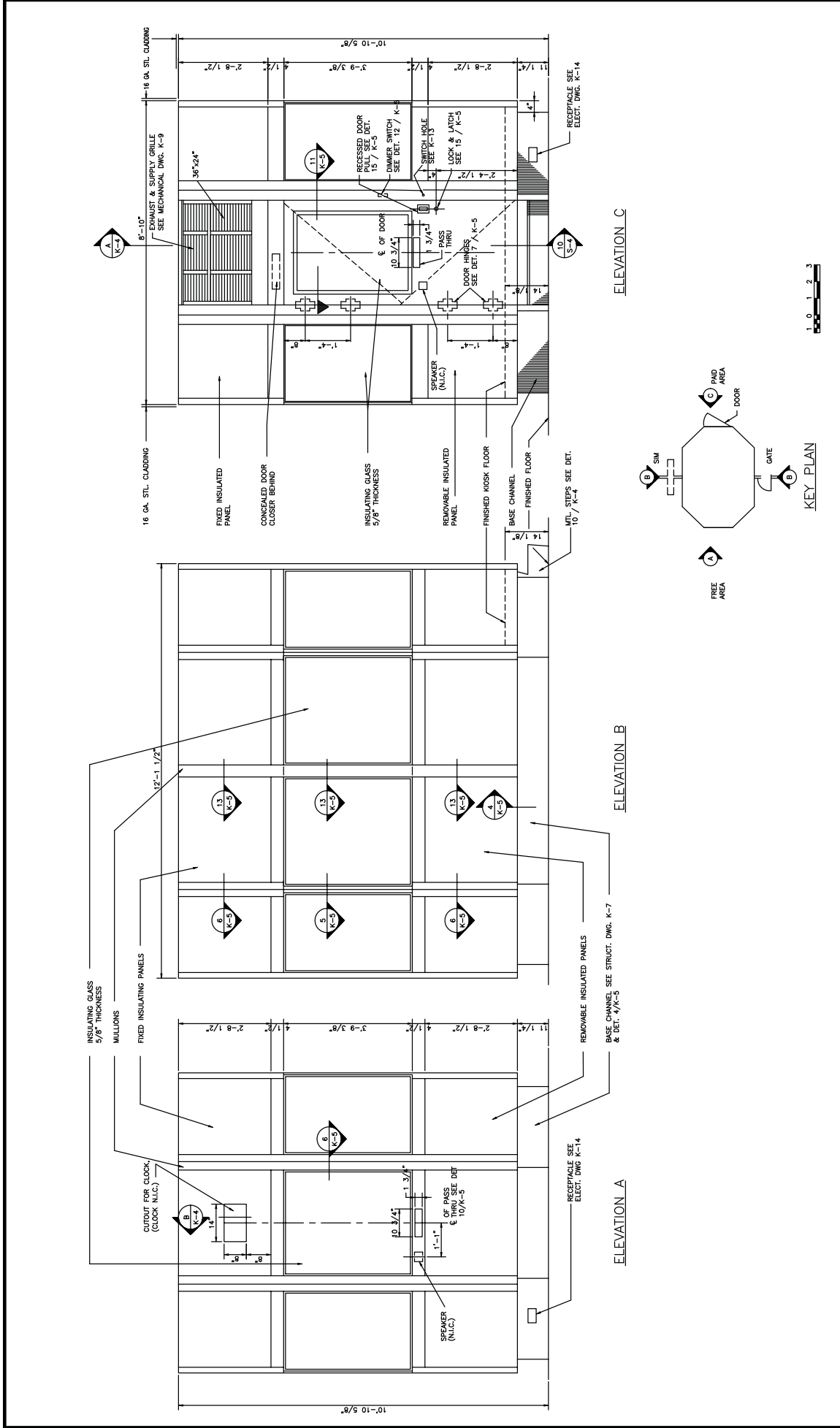
NUMBER	DATE	DESCRIPTION

DESIGNED: _____ DATE: _____
 DRAWN: _____ DATE: _____
 CHECKED: _____ DATE: _____
 APPROVED: _____ DATE: _____
 UPDATED: _____ DATE: _____

SCALE: 3/4" = 1'-0"
 OR AS SHOWN

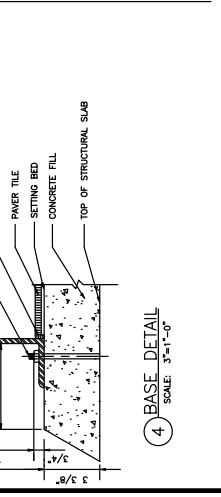
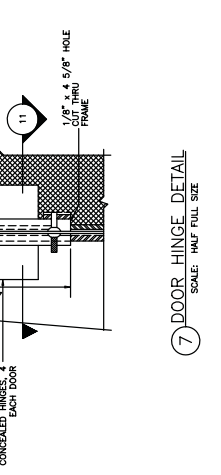
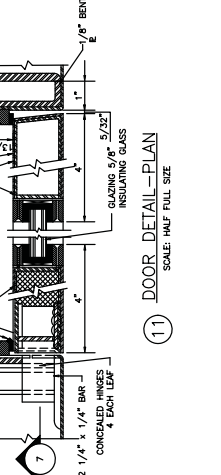
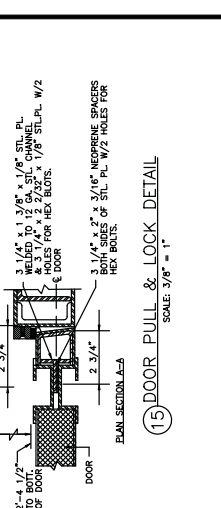
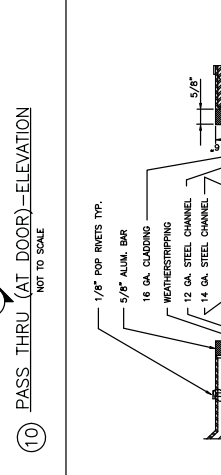
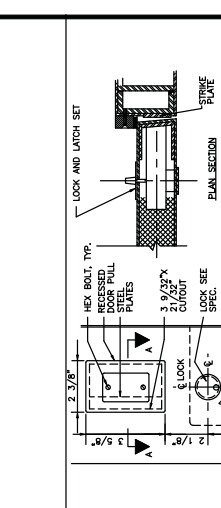
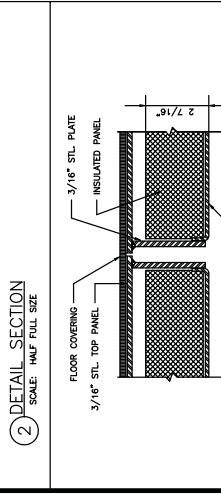
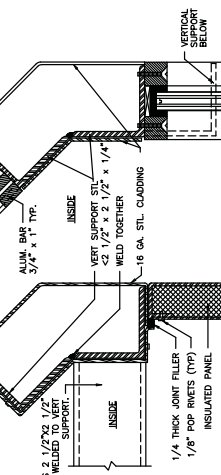
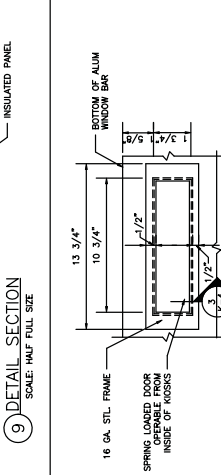
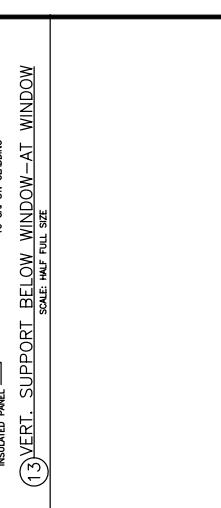
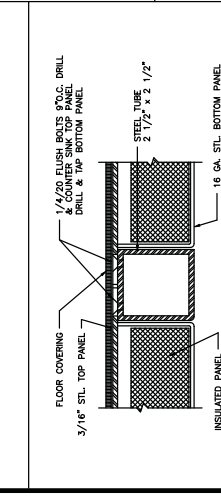
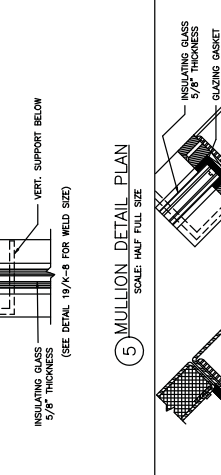
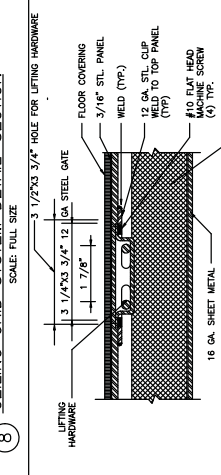
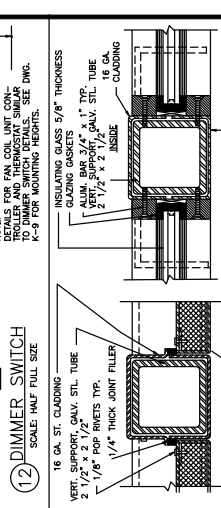
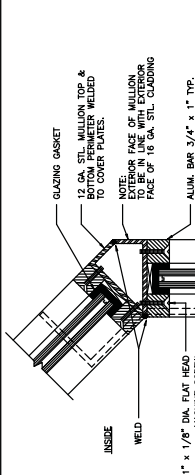
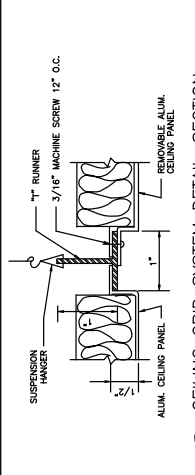
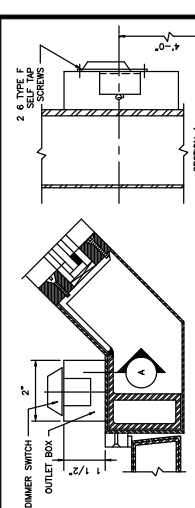
DRAWING NO: ST-CM-K-002

PROJECT: KIOSK
 PLANS AT BASE, FLOOR, CEILING AND ROOF



DESIGNED		DATE		DRAWING NO.	
				ST-CM-K-003	
DRAWN		DATE		SCALE	
				3/4"=1'-0"	
CHECKED		DATE		APPROVED	
APPROVED		DATE		SUBMITTED	
UPDATED		DATE		APPROVED	
				WASHINGTON METROPOLITAN AREA TRANSIT AUTHORITY DEPARTMENT OF TRANSIT SYSTEM DEVELOPMENT OFFICE OF SYSTEMS	
				KIOSK ELEVATIONS	
				APPROVED: <i>[Signature]</i> May 3, 2001 DIRECTOR DATE	

REVISIONS	DATE	BY	DESCRIPTION



DESIGNED	DRAWN	CHECKED	APPROVED	UPDATED

DATE	BY	DESCRIPTION
08/2001	SYSP	Revised and Issued by the Authority

DATE	BY	DESCRIPTION

REFERENCE DRAWINGS	
NUMBER	DESCRIPTION

WASHINGTON METROPOLITAN AREA TRANSIT AUTHORITY
DEPARTMENT OF TRANSIT SYSTEM DEVELOPMENT
OFFICE OF SYSTEMS

APPROVED: *[Signature]*
DIRECTOR

DATE: May 3, 2001

SCALE: AS SHOWN

DRAWING NO: ST-CM-K-005

PROJECT: KIOSK DETAILS

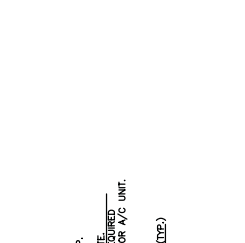


STRUCTURAL NOTES:

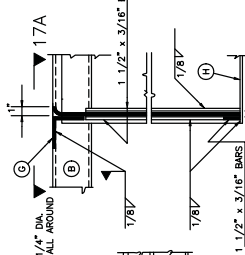
- IF REQUIRED, ADJUST LOCATIONS OF ANCHOR BOLTS TO MAINTAIN UNIFORM SPACING. SUBMIT DETAILS TO ENGINEER FOR APPROVAL.
- DO NOT LOCATE ANCHOR BOLTS WITHIN 3 INCHES OF EMBEDDED TENDS.
- CONTRACTOR SHALL PROVIDE "CUT OUTS" IN FLOOR PANELS, COLUMN, AND ROOF STEEL DECK AS MAY BE REQUIRED WITH KIOSK CONSTRUCTION. DETAIL OF "CUT OUTS" SHALL BE SUBMITTED TO THE ENGINEER WITH MECHANICAL AND ELECTRICAL DISCIPLINES.
- SEE DWG. K-13 FOR DETAILS OF "CUT OUTS" FOR COMMUNICATION AND POWER CABLING.
- THE LIMIT OF PAPER TILE WORK SHOWN IS APPROXIMATE. THE CONTRACTOR IS REQUIRED TO BE FAMILIAR WITH THE PAPER TILE INSTALLATION BY STATION CONTRACTOR.
- IF THE PAPER TILE WORK ADJACENT TO KIOSK LOCATION HAS ALREADY BEEN COMPLETED, THE CONTRACTOR SHALL NOTIFY THE STATION CONTRACTOR AND THE ENGINEER AS NECESSARY. AT THE COMPLETION OF KIOSK CONSTRUCTION, THE CONTRACTOR SHALL RECALL THE SAME KIND OF PAPER TILE TO THE ORIGINAL CONTRACTOR. THE UNDAUNTED PAPER TILES MAY BE USED FOR RENOVATION WITH THE ENGINEER'S APPROVAL.
- IF THE PAPER TILE INSTALLATION IS UNDERWAY, THE CONTRACTOR SHALL NOTIFY THE STATION CONTRACTOR AND THE ENGINEER AS NECESSARY. THE INSTALLATION OF OVERLAY AND PAPER TILES WITH THE CONTRACTOR SHALL BE SCHEDULED WITH THE STATION CONTRACTOR.
- ALL CORNERS AT BENDS BETWEEN FREE EDGES OF SHEET METAL SHALL BE SEALED AND FINISHED AS PER APPROVAL.
- CONTRACTOR SHALL SUBMIT STRUCTURAL SUPPORT DETAILS FOR ALL MECHANICAL, ELECTRICAL, PLENUM, DUCT WORK, AND ISOLATORS FOR THE CONTROL OF VIBRATION AND NOISE. SEE DWG. K-10 FOR MECHANICAL EQUIPMENT SUPPORT DETAILS.
- FOR WELDING OF TOP AND BOTTOM OF THE HULLINGS SEE DWG. K-7, DETAIL 19 AND SECTIONS 21, 22.
- LEGEND OF STRUCTURAL MEMBERS: SEE DWG. K-7



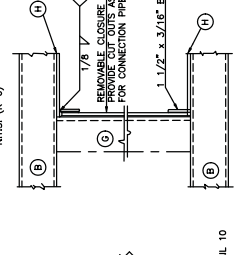
SECTION 6
SCALE: 3"=1'-0" (K-7)



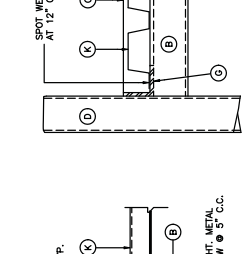
DETAIL 17
SCALE: N.T.S. (K-6)



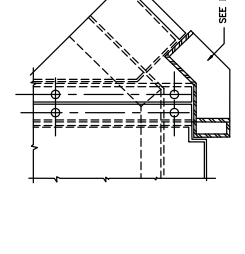
SECTION 7
SCALE: 3"=1'-0" (K-7)



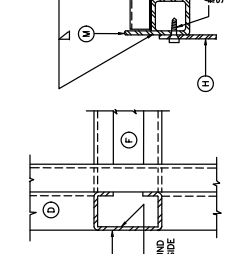
DETAIL 18
SCALE: 3"=1'-0" (K-8)



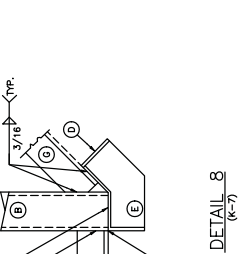
SECTION 8
SCALE: 3"=1'-0" (K-7)



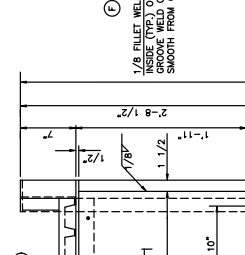
DETAIL 19
SCALE: 3"=1'-0" (K-7)



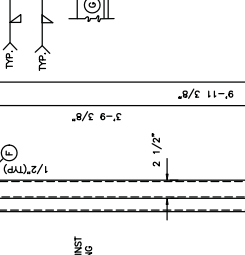
SECTION 9
SCALE: 3"=1'-0" (K-7)



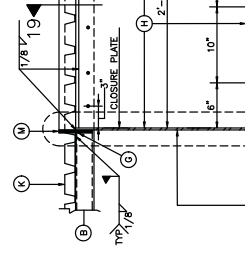
DETAIL 20
SCALE: 3"=1'-0" (K-7)



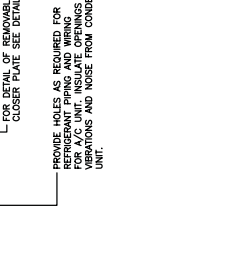
SECTION 10
SCALE: 3"=1'-0" (K-7)



DETAIL 21
SCALE: 3"=1'-0" (K-7)



SECTION 11
SCALE: 3"=1'-0" (K-7)



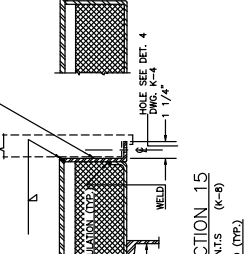
DETAIL 22
SCALE: 3"=1'-0" (K-7)



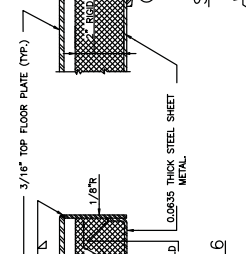
SECTION 12
SCALE: 3"=1'-0" (K-7)



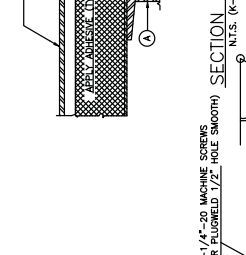
DETAIL 23
SCALE: 3"=1'-0" (K-7)



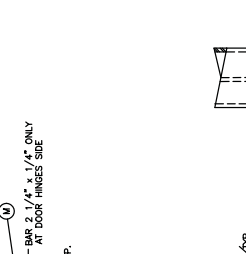
SECTION 13
SCALE: N.T.S. (K-8)



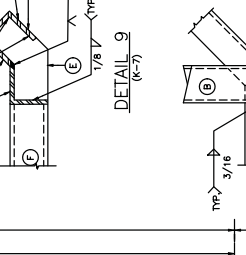
SECTION 14
SCALE: N.T.S. (K-8)



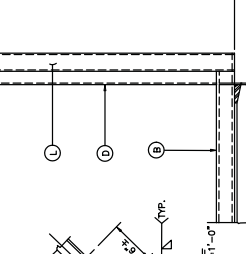
SECTION 15
SCALE: N.T.S. (K-8)



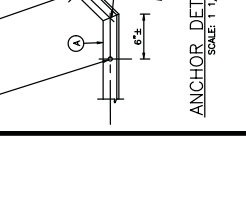
SECTION 16
SCALE: N.T.S. (K-8)



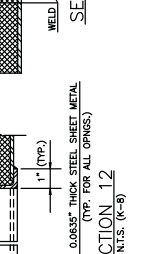
SECTION 17
SCALE: N.T.S. (K-8)



SECTION 18
SCALE: N.T.S. (K-8)



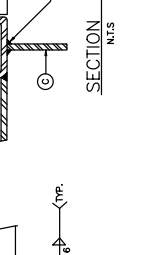
SECTION 19
SCALE: N.T.S. (K-8)



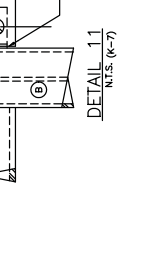
SECTION 20
SCALE: N.T.S. (K-8)



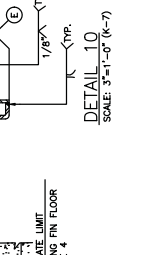
SECTION 21
SCALE: N.T.S. (K-8)



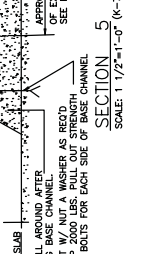
SECTION 22
SCALE: N.T.S. (K-8)



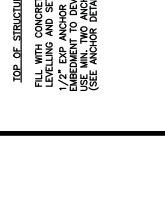
SECTION 23
SCALE: N.T.S. (K-8)



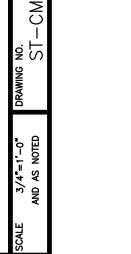
SECTION 24
SCALE: N.T.S. (K-8)



SECTION 25
SCALE: N.T.S. (K-8)



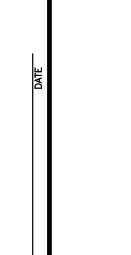
SECTION 26
SCALE: N.T.S. (K-8)



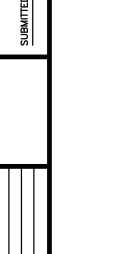
SECTION 27
SCALE: N.T.S. (K-8)



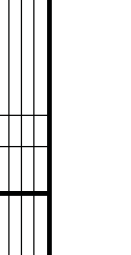
SECTION 28
SCALE: N.T.S. (K-8)



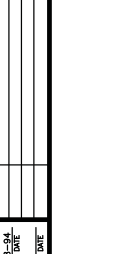
SECTION 29
SCALE: N.T.S. (K-8)



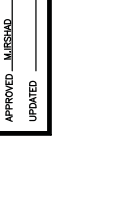
SECTION 30
SCALE: N.T.S. (K-8)



SECTION 31
SCALE: N.T.S. (K-8)



SECTION 32
SCALE: N.T.S. (K-8)



SECTION 33
SCALE: N.T.S. (K-8)

The Drawing Reflects a WMATA standard design approach. Project specific drawings must be developed by the Contractor which reflect this Design Philosophy

WASHINGTON METROPOLITAN AREA TRANSIT AUTHORITY
DEPARTMENT OF TRANSIT SYSTEMS DEVELOPMENT
OFFICE OF SYSTEMS

APPROVED: *[Signature]*
DIRECTOR
DATE: May 3, 2001

SCALE: 3/4"=1'-0"
AND AS NOTED
DRAWING NO.: ST-CM-K-006
OBL-G-DJ AMB

KIOSK
FLOOR PLAN, SECTIONS, DETAILS AND
STRUCTURAL NOTES

DESIGNED: R.ROBERTS
DRAWN: G.HACKETT
CHECKED: G.HACKETT
APPROVED: J.MURSHAD
UPDATED: _____

DATE: 05/2001
BY: R.ROBERTS
DESCRIPTION: Revised and Issued by the Authority

REVISIONS

DATE	BY	DESCRIPTION
05/2001	R.ROBERTS	Revised and Issued by the Authority

REFERENCE DRAWINGS

NUMBER	DESCRIPTION
ST-CM-K-006	KIOSK FLOOR PLAN, SECTIONS & DETAILS

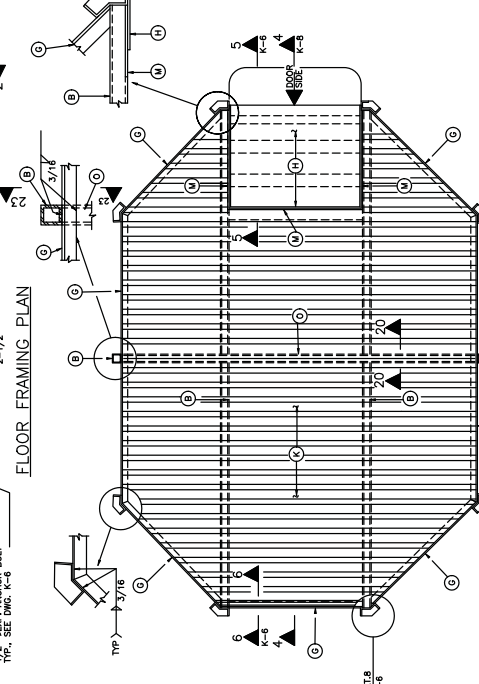
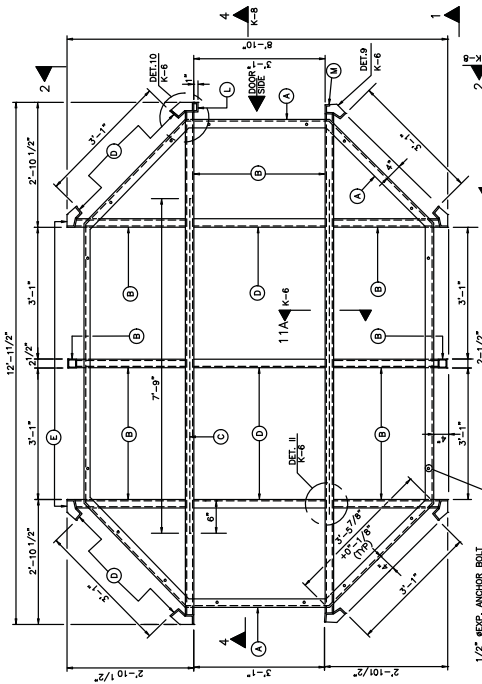
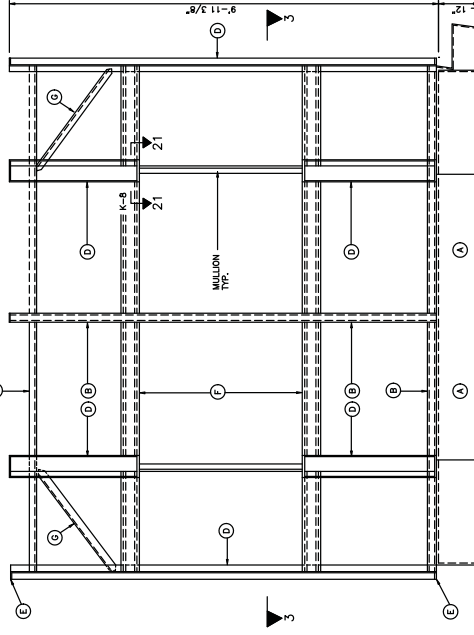
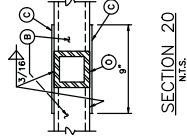
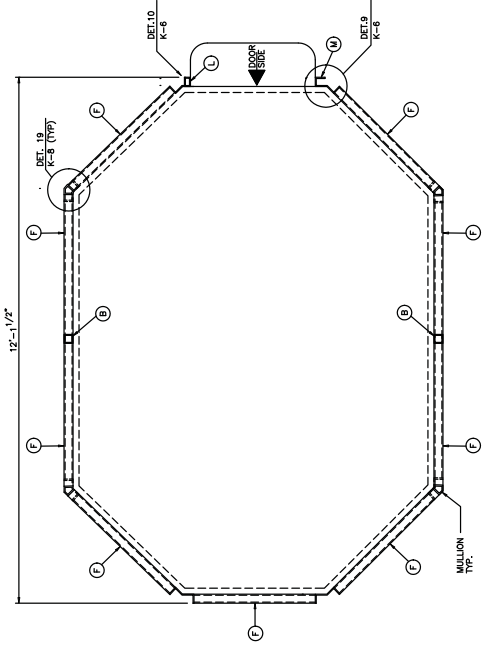
DESIGNED: R.ROBERTS
DRAWN: G.HACKETT
CHECKED: G.HACKETT
APPROVED: J.MURSHAD
UPDATED: _____

DATE: 05/2001
BY: R.ROBERTS
DESCRIPTION: Revised and Issued by the Authority

REVISIONS

DATE	BY	DESCRIPTION
05/2001	R.ROBERTS	Revised and Issued by the Authority





- LEGEND**
- (A) C12 x 25 CHANNEL
 - (B) TS 2 1/2 x 2 1/2 x 3/16
 - (C) BAR 2 1/2 x 3/8
 - (D) L 2 1/2 x 2 1/2 x 1/4
 - (E) COVER PLATE 1/4" THICK
 - (F) FORMED STEEL SHEET 0.1084" THICK
 - (G) L 2 x 2 x 3/16
 - (H) FORMED STEEL PLATE 3/16" THICK
 - (I) STIFFENER PLATE 4" x 3/16"
 - (K) 1 1/2" - 0.0398" THICK WIDE RB GALVANIZED STEEL ROOF BECK, MIN. I = 0.20 IN⁴ WELD IN ACCORD WITH MFR'S RECOMMENDATIONS.
 - (L) BENT PLATE 1/8" THICK
 - (M) BAR 2 1/4" x 1/4"
 - (N) COVER PLATE 3/16" THICK
 - (S) TS 2 1/2 x 2 1/2 x 1/4

WASHINGTON METROPOLITAN AREA TRANSIT AUTHORITY
 DEPARTMENT OF TRANSIT SYSTEMS DEVELOPMENT
 OFFICE OF SYSTEMS

KIOSK
 FLOOR AND ROOF FRAMING PLANS, ELEVATION
 AND SECTIONS.

SCALE 3/4"=1'-0"
 DATE: Nov. 3, 2001
 DRAWING NO. ST-CM-K-007
 OBL-G-DJ/AMB

APPROVED: [Signature]
 DIRECTOR

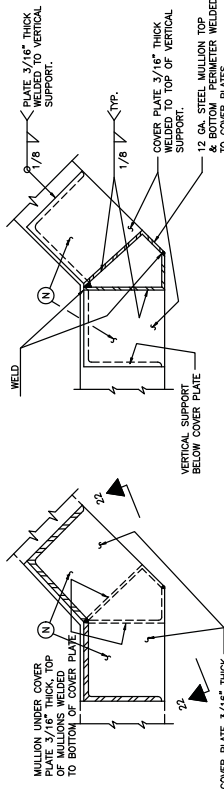
REVISIONS

DATE	BY	DESCRIPTION
09/20/01	DP/CF	Revised and issued by the Authority

REFERENCE DRAWINGS

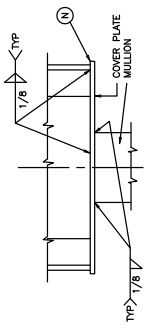
NUMBER	DATE	DESCRIPTION
ST-CM-K-001		GENERAL NOTES AND FINISH SCHEDULES
ST-CM-K-002		SECTION & DETAILS

DESIGNED	DRAWN	CHECKED	APPROVED	UPDATED

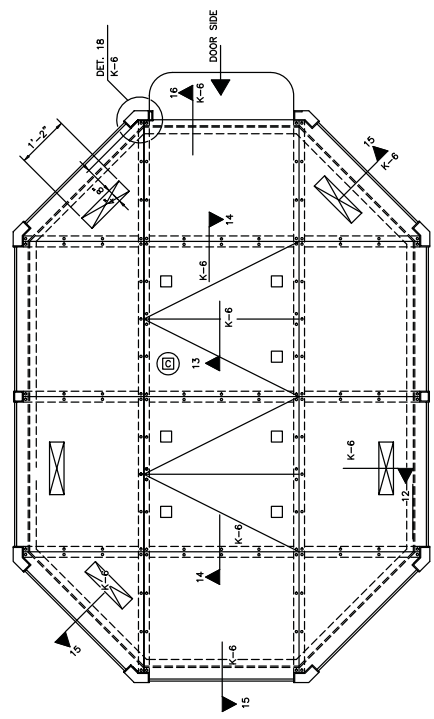


DETAILS 19
N.T.S. K-7

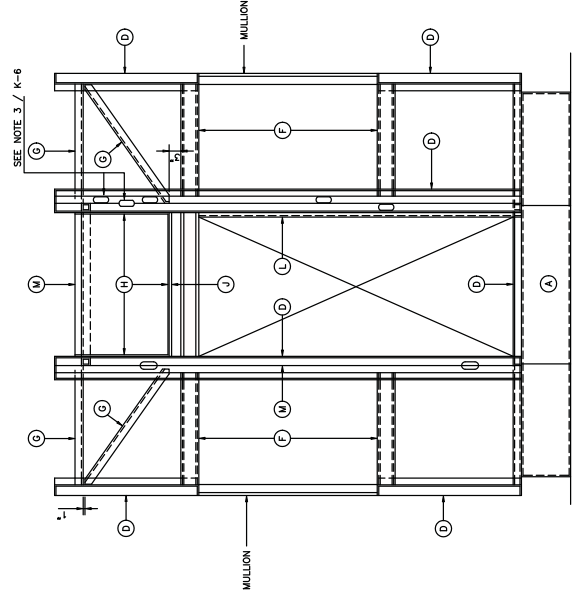
SECTION 21
N.T.S. K-7



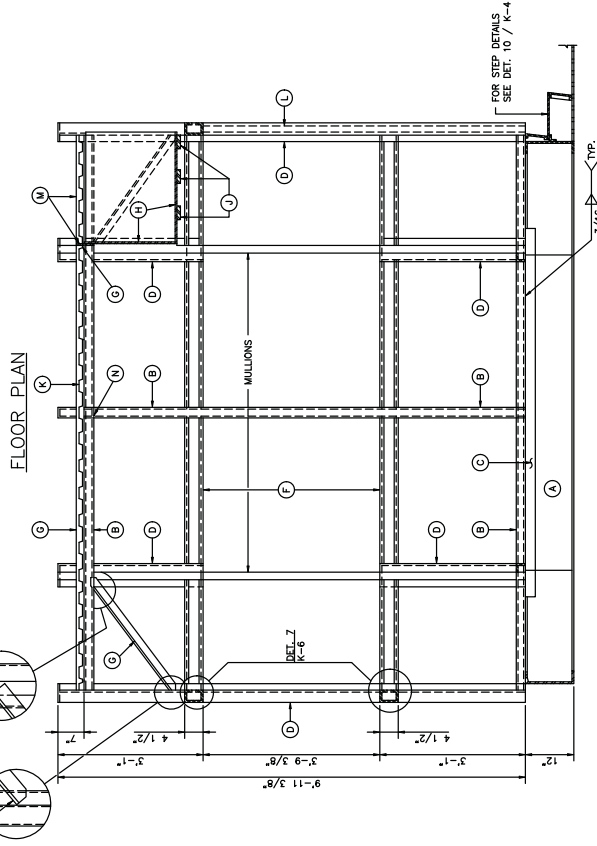
SECTION 22
N.T.S.



FLOOR PLAN
(FOR OTHER DIMENSIONS AND DETAILS, SEE (ING. K-2))




ELEVATION 2
K-7



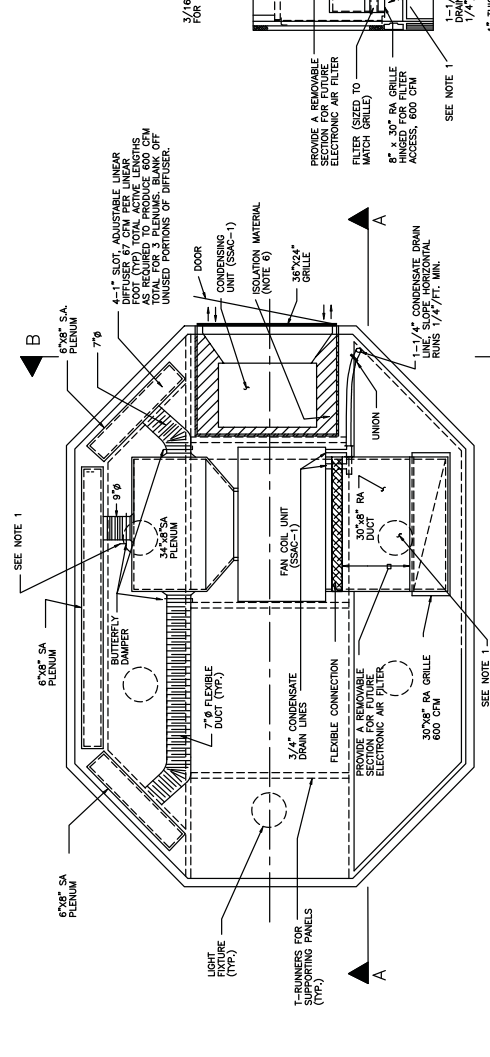
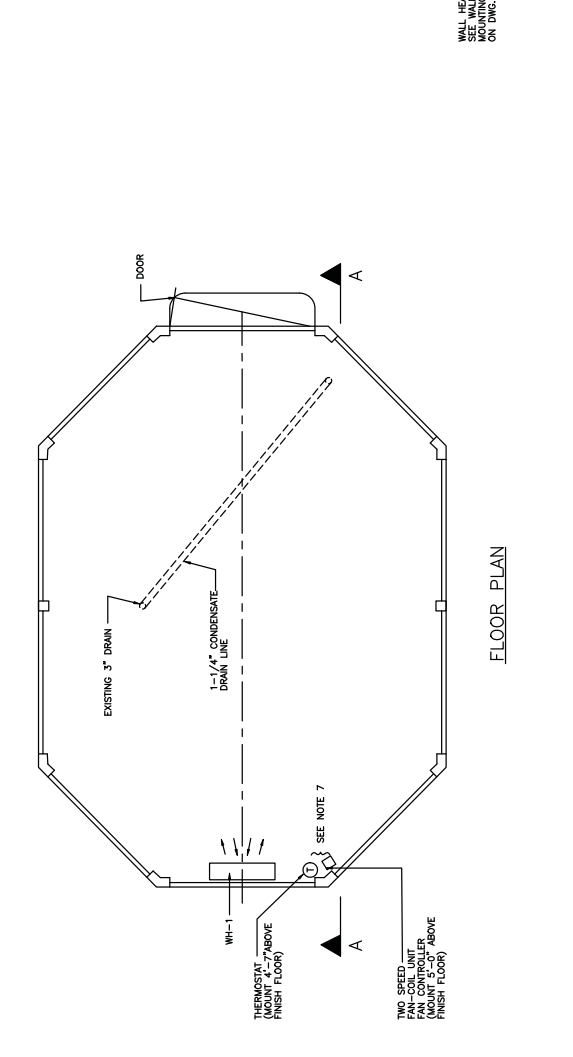
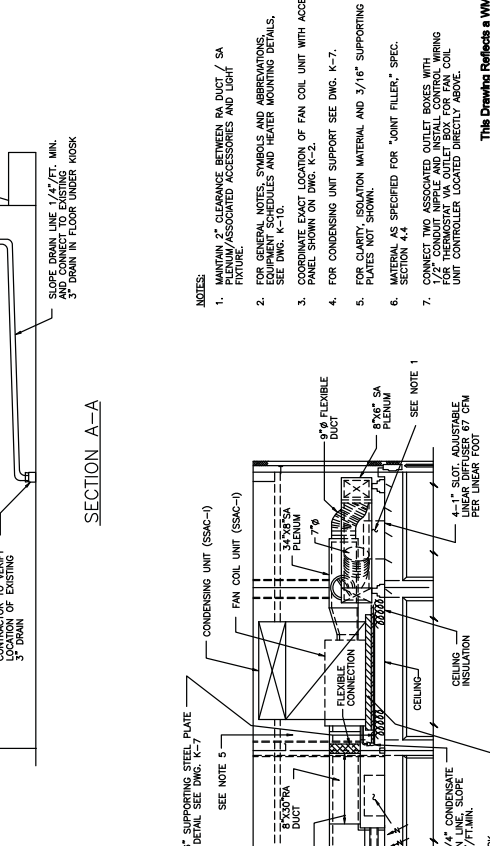
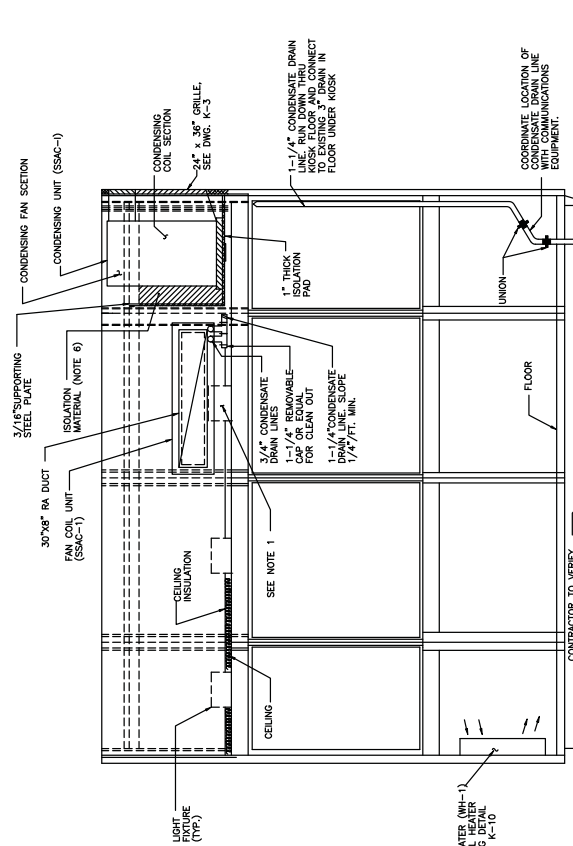
SECTION 4
K-7

This Drawing Reflects an I/M/MATA standard design approach. Project specific drawings must be developed by the Contractor which reflect this Design Philosophy.



WASHINGTON METROPOLITAN AREA TRANSIT AUTHORITY DEPARTMENT OF TRANSIT SYSTEMS DEVELOPMENT OFFICE OF SYSTEMS	
SUBMITTED _____ DATE	APPROVED  DIRECTOR DATE
KIOSK FLOOR PLAN, ELEVATION SECTIONS AND DETAILS	
SCALE 3/4" = 1'-0"	DRAWING NO. ST-CM-K-008

REFERENCE DRAWINGS		REVISIONS	
NUMBER	DATE	BY	DESCRIPTION
ST-CM-K-001	05/2001	PJ/DF	Revised and issued by the Authority
ST-CM-K-002			
ST-CM-K-003			
ST-CM-K-004			
ST-CM-K-005			
ST-CM-K-006			
ST-CM-K-007			
ST-CM-K-008			



- NOTES:
1. MAINTAIN 2" CLEARANCE BETWEEN RA DUCT / SA PLENUM/ASSOCIATED ACCESSORIES AND LIGHT PANEL.
 2. ON GENERAL NOTES, SYMBOLS AND ABBREVIATIONS FOR THE SSAC-1, SLOTTED AND HEATER MOUNTING DETAILS, SEE DWG. K-10.
 3. COORDINATE EXACT LOCATION OF FAN COIL UNIT WITH ACCESS PANEL SHOWN ON DWG. K-2.
 4. FOR CLARITY, ISOLATION MATERIAL AND 3/16" SUPPORTING PLATES NOT SHOWN.
 5. MATERIAL AS SPECIFIED FOR "JOINT FILLER," SPEC. SECTION 4.4
 6. CONNECT TWO ASSOCIATED OUTLET BOXES WITH 1/2" CONDUIT PIPE AND INSTALL CONTROL WIRING TO THE FAN COIL UNIT. FAN COIL UNIT AND FAN COIL UNIT CONTROLLER LOCATED DIRECTLY ABOVE.

This Drawing Reflects a WMATA standard design approach. Any changes must be coordinated by the Contractor which reflect this Design Philosophy

WASHINGTON METROPOLITAN AREA TRANSIT AUTHORITY
 DEPARTMENT OF TRANSIT SYSTEMS DEVELOPMENT
 OFFICE OF SYSTEMS

DESIGNED: K. PAEL DATE: 05/2001
 DRAWN: M. WASSY DATE: 05/2001
 CHECKED: J. BUNANS DATE: 05/2001
 APPROVED: E. GARNER DATE: 05/2001
 UPDATED: _____ DATE: _____

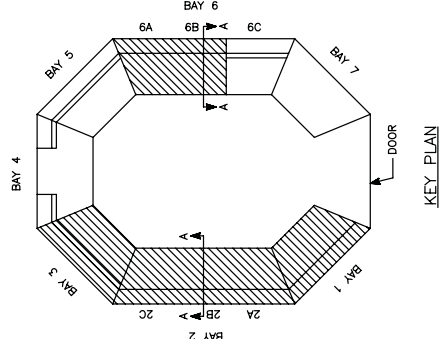
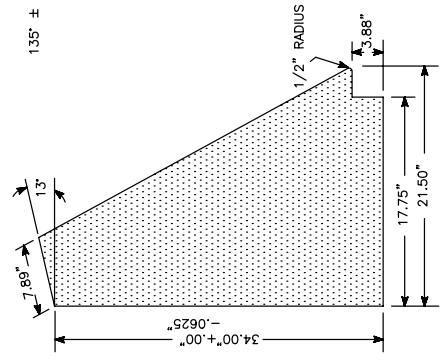
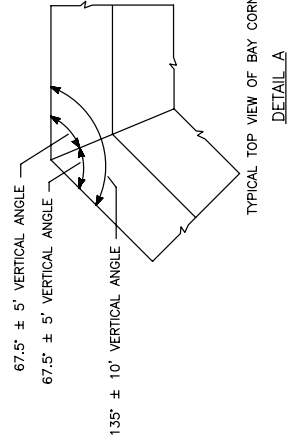
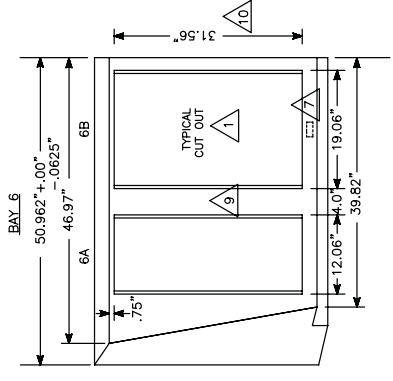
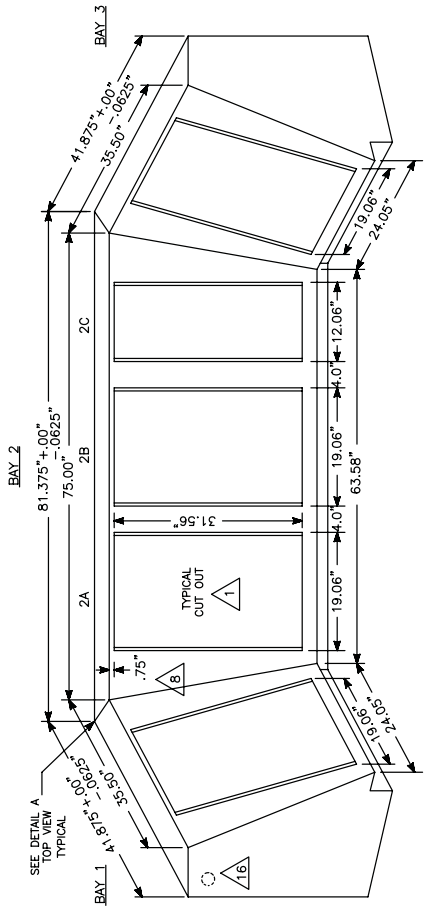
APPROVED: _____ DIRECTOR DATE: _____

REVISIONS	DATE	BY	DESCRIPTION
	05/2001	EW/DF	Revised and issued by the Authority

DESIGNED: K. PAEL DATE: 05/2001
 DRAWN: M. WASSY DATE: 05/2001
 CHECKED: J. BUNANS DATE: 05/2001
 APPROVED: E. GARNER DATE: 05/2001
 UPDATED: _____ DATE: _____

KIOSK
 AIR CONDITIONING AND HEATING
 PLANS & SECTIONS

SCALE: NONE
 DRAWING NO.: ST-CM-K-009
 OBL-G-DJ AMB



- NOTES:
1. EQUIPMENT CUT-OUT WITH RECESSED PANEL MOUNTING RAILS SHALL BE DIMENSIONED, DRILLED AND TAPPED IN ACCORDANCE WITH EIA STANDARD RS-310-C.
 2. BAYS 1, 2A, 2B, 2C AND 3, AND BAY 6A AND 6B SHALL BE ONE PIECE SECTIONS.
 3. UNLESS SPECIFIED, STANDARD LINEAR TOLERANCE SHALL BE ±0.03 INCHES.
 4. UNLESS SPECIFIED, STANDARD ANGLE TOLERANCE SHALL BE ±30°.
 5. CONTRACTOR SHALL DESIGN APPROPRIATE INNER SUPPORT STRUCTURE OF CABINETS.
 6. ALL SURFACE OF STRUCTURES SHALL BE TREATED AFTER WELDING WITH DUPONT CHROMOTIZED PRIME EU-9007 OR APPROVED EQUAL.
 7. CONTRACTOR SHALL DETERMINE CUT-OUT DIMENSIONS FOR TEST EQUIPMENT DUPLEX RECEPTACLE.
 8. CONTRACTOR SHALL DESIGN CABLE PASSAGEWAY BETWEEN BAY 1 AND BAY 3.
 9. CONTRACTOR SHALL DESIGN CABLE PASSAGEWAY BETWEEN BAY 6A AND BAY 6B.
 10. CONTRACTOR SHALL DESIGN CABLE PASSAGEWAY BETWEEN BAY 6B AND BAY 6C.
 11. SPACE RESERVED FOR THE ELEVATOR PANEL AND CCTV KIOSK CONTROL PANEL SHALL BE 7.0 INCHES IN HEIGHT (4 RACK UNITS).
 12. THE CONTRACTOR SHALL ADJUST THE DIMENSIONS SHOWN WITH THE ACTUAL KIOSK FABRICATION DETAILS.
 13. BLANK PANELS INDICATED SHALL BE FURNISHED AND INSTALLED BY THE CONTRACTOR.
 14. BLANK PANELS SHALL BE BRUSHED ALUMINUM THICKNESS SHALL BE 1/8 INCH.
 15. THE KIOSK CABLE TERMINATION RACK SHALL BE LOCATED BEHIND THE BLANK PANEL OF BAY 6B.
 16. THE CONTRACTOR SHALL DETERMINE CUT-OUT DIMENSIONS AND LOCATION FOR CABLE PASSAGEWAY TO INTERPHONE SPEAKER IN THE KIOSK DOOR.

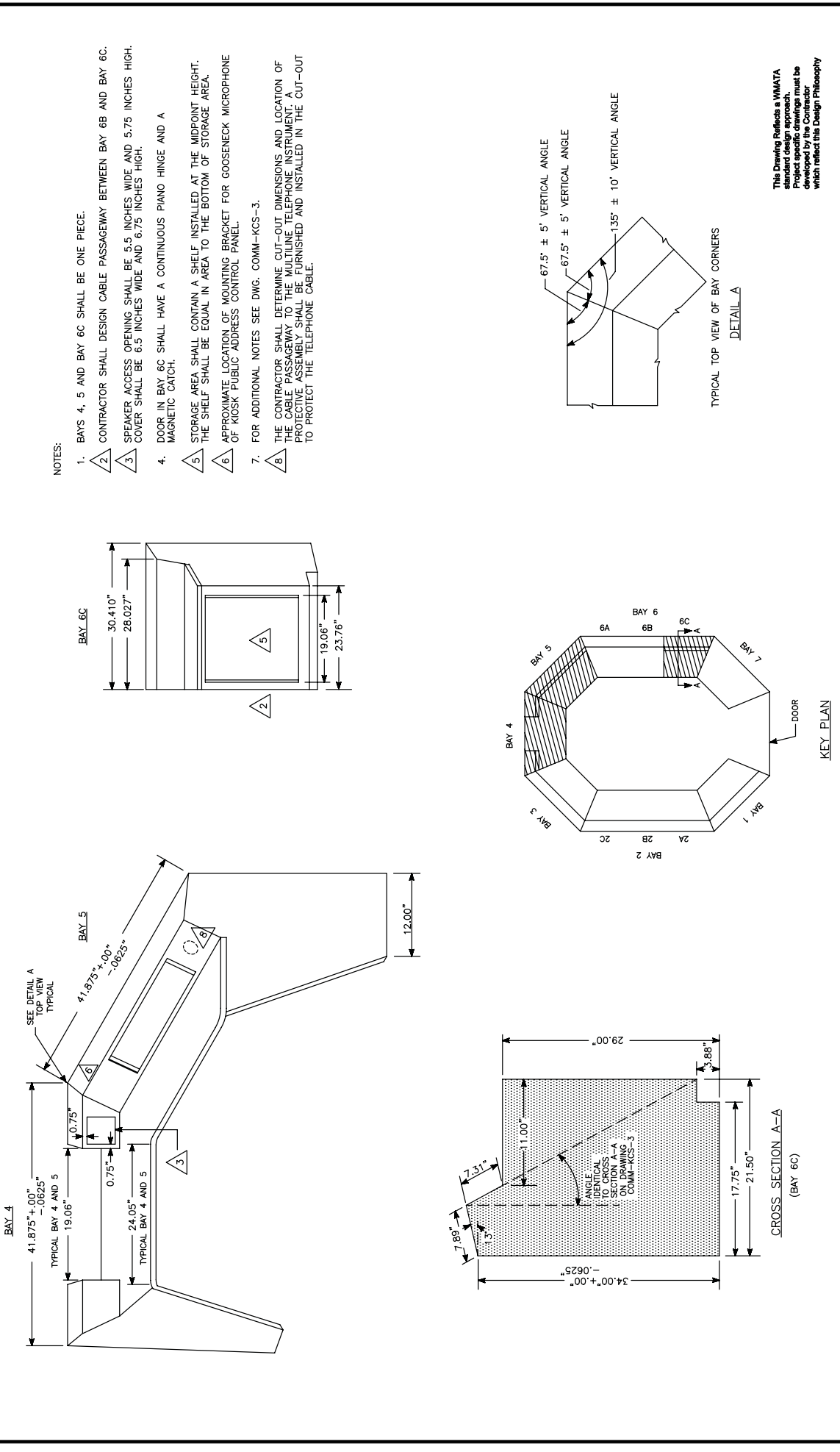
This Drawing Reflects a WMATA standard design approach. Project specific drawings must be developed by the Contractor which reflect the Design Philosophy

CROSS SECTION A-A
TYPICAL BAY 1, BAY 2A, 2B, 2C,
BAY 3, BAY 6A AND 6B

DESIGNED		DATE		REVISIONS	
DRAWN	DATE	DATE	DESCRIPTION	DATE	BY
CHECKED	DATE	08/20/01	STSP	08/20/01	STSP
APPROVED	DATE				
UPDATED	DATE				

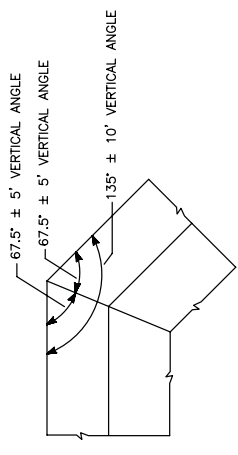
SUBMITTED		DATE		APPROVED	
DATE		DATE		DIRECTOR	

WASHINGTON METROPOLITAN AREA TRANSIT AUTHORITY		KIOSK CABINET DIMENSIONS	
DEPARTMENT OF TRANSIT SYSTEM DEVELOPMENT		SC#BINE	
OFFICE OF SYSTEMS		19990901-W-KCS-003	
		MXXXXX-XXXX	



NOTES:

1. BAYS 4, 5 AND BAY 6C SHALL BE ONE PIECE.
2. CONTRACTOR SHALL DESIGN CABLE PASSAGEWAY BETWEEN BAY 6B AND BAY 6C.
3. SPEAKER ACCESS OPENING SHALL BE 5.5 INCHES WIDE AND 5.75 INCHES HIGH. COVER SHALL BE 6.5 INCHES WIDE AND 6.75 INCHES HIGH.
4. DOOR IN BAY 6C SHALL HAVE A CONTINUOUS PIANO HINGE AND A MAGNETIC CATCH.
5. STORAGE AREA SHALL CONTAIN A SHELF INSTALLED AT THE MIDPOINT HEIGHT. THE SHELF SHALL BE EQUAL IN AREA TO THE BOTTOM OF STORAGE AREA.
6. APPROXIMATE LOCATION OF MOUNTING BRACKET FOR GOOSENECK MICROPHONE OF KIOSK PUBLIC ADDRESS CONTROL PANEL.
7. FOR ADDITIONAL NOTES SEE DWG. COMM-KCS-3.
8. THE CONTRACTOR SHALL DETERMINE CUT-OUT DIMENSIONS AND LOCATION OF THE CABLE PASSAGEWAY TO THE MULTILINE TELEPHONE INSTRUMENT. A PROTECTIVE ASSEMBLY SHALL BE FURNISHED AND INSTALLED IN THE CUT-OUT TO PROTECT THE TELEPHONE CABLE.



This Drawing Reflects a WAMATA standard design approach. Project specific drawings must be developed by the Contractor which reflect the Design Philosophy

WASHINGTON METROPOLITAN AREA TRANSIT AUTHORITY
 DEPARTMENT OF TRANSIT SYSTEM DEVELOPMENT
 OFFICE OF SYSTEMS

APPROVED: *[Signature]*
 DIRECTOR

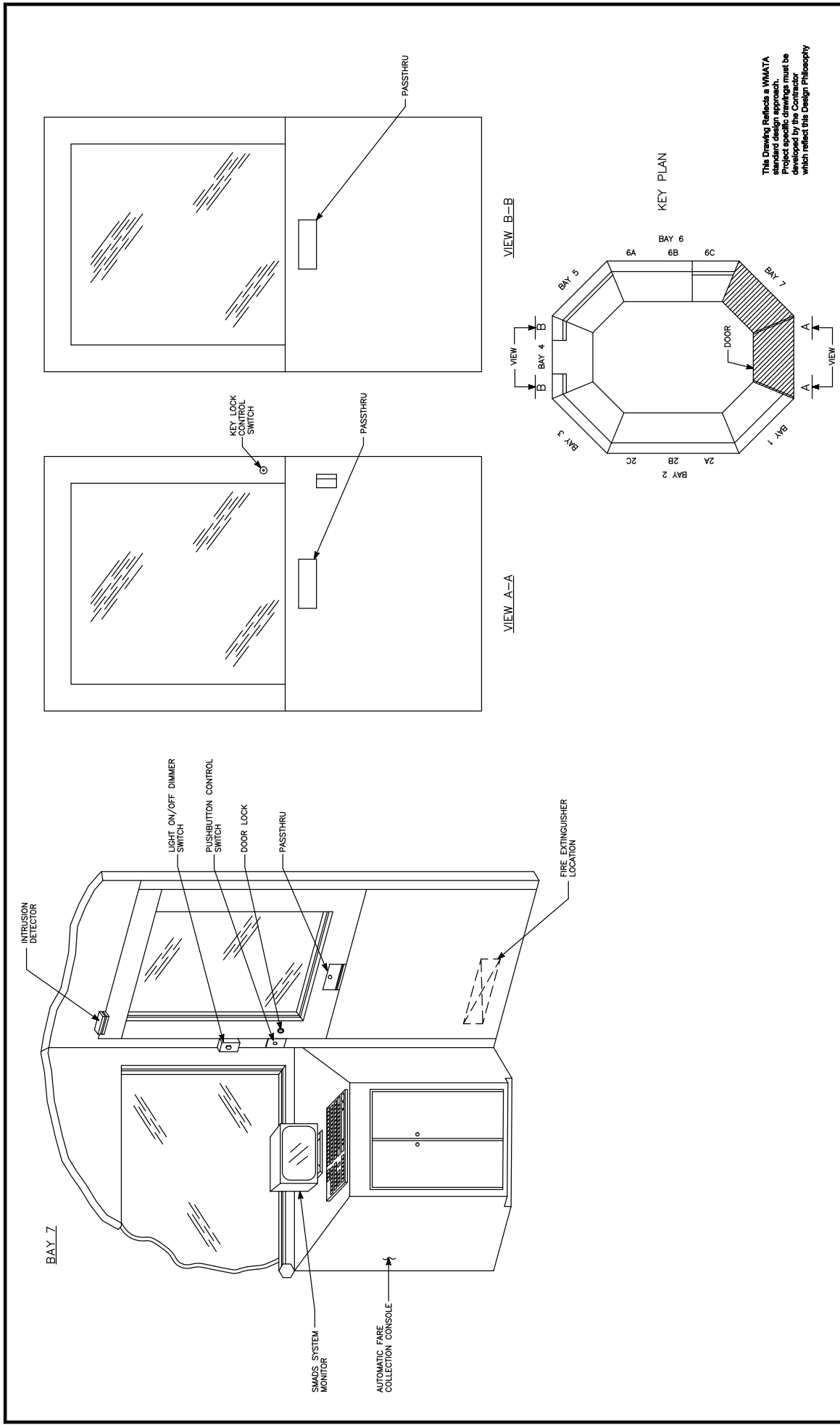
DATE: May 3, 2001

SCALE: NONE

DRAWING NO: ST-CM-KCS-004

KIOSK CABINET DIMENSIONS

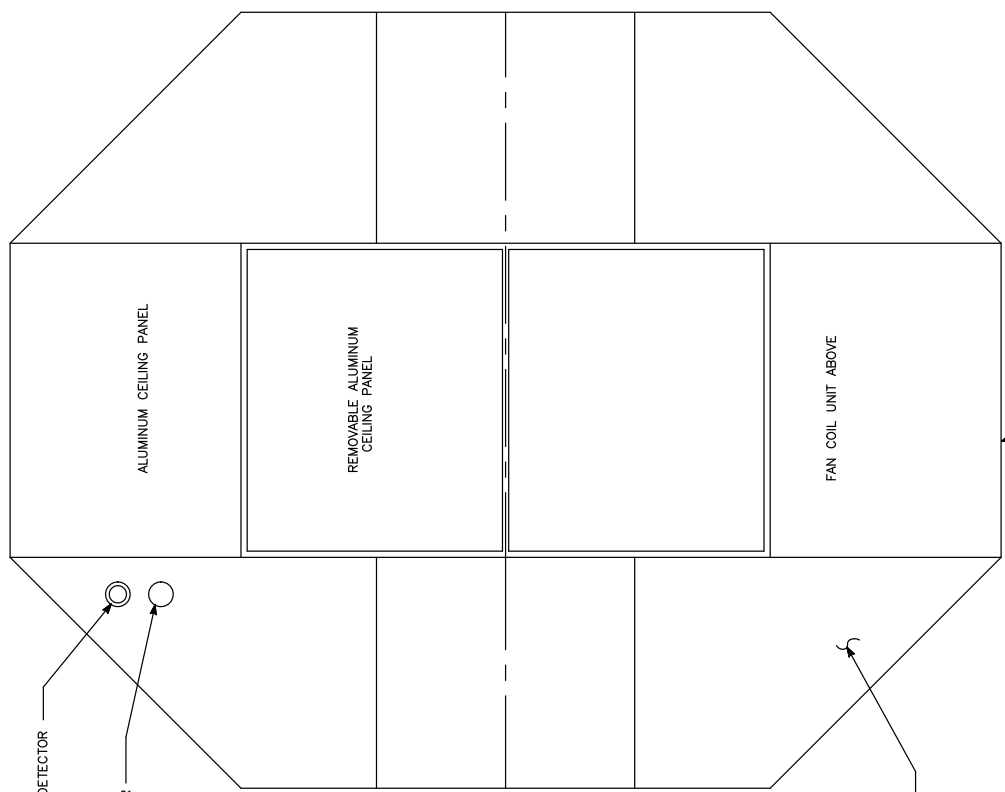
DESIGNED	DRAWN	CHECKED	APPROVED	UPDATED										
DATE: 6-00	DATE: 6-00	DATE: 6-00	DATE: 6-00	DATE: 6-00										
<table border="1"> <thead> <tr> <th>NUMBER</th> <th>DESCRIPTION</th> <th>DATE</th> <th>BY</th> <th>REVISIONS</th> </tr> </thead> <tbody> <tr> <td>08/2001</td> <td>STSP</td> <td>08/2001</td> <td>STSP</td> <td>Revised and Issued by the Authority</td> </tr> </tbody> </table>					NUMBER	DESCRIPTION	DATE	BY	REVISIONS	08/2001	STSP	08/2001	STSP	Revised and Issued by the Authority
NUMBER	DESCRIPTION	DATE	BY	REVISIONS										
08/2001	STSP	08/2001	STSP	Revised and Issued by the Authority										



WASHINGTON METROPOLITAN AREA TRANSIT AUTHORITY DEPARTMENT OF TRANSIT SYSTEM DEVELOPMENT OFFICE OF SYSTEMS		PASSENGER/ATTENDANT INTERPHONE SPEAKER LOCATIONS	
DESIGNED	DATE	BY	REVISIONS
DRAWN	DATE	DATE	DESCRIPTION
CHECKED	DATE	DATE	08/2001 STS
APPROVED	DATE	DATE	Revised and Approved by the Authority
UPDATED	DATE	DATE	
SUBMITTED		DATE	APPROVED
		DATE	DIRECTOR
		DATE	May 3, 2001
		SCALE	NONE
		DRAWING NO.	SI-CM-KCS-005
		084-C-1 AMB	



NOTES:
 1. BOTH THE IONIZATION AND COMBINATION DETECTOR ARE LOCATED ABOVE THE CEILING.



REFLECTED CEILING PLAN

The Drawing Reflects a VMATA
 Standard Design Approach.
 The Contractor must be
 developed by the Contractor
 which reflect this Design Philosophy

WASHINGTON METROPOLITAN AREA TRANSIT AUTHORITY
 DEPARTMENT OF TRANSIT SYSTEM DEVELOPMENT
 OFFICE OF SYSTEMS

APPROVED: *[Signature]* DIRECTOR
 DATE: May 3, 2001

SUBMITTED: _____ DATE: _____

SCALE: NONE

DRAWING NO.: ST-CM-KCS-006

CEILING PLAN

MXXXX-XXX
 04/2001

DESIGNED		DRAWN		CHECKED		APPROVED		UPDATED	
DATE	BY	DATE	BY	DATE	BY	DATE	BY	DATE	BY

REFERENCE DRAWINGS		REVISIONS	
NUMBER	DESCRIPTION	DATE	BY
		08/2001	STSP